

## Anti-CLDN3 hlgG1 Antibody(H4G3)

### Product information

GM-51514AB-10	10 µg
GM-51514AB-100	100 µg
GM-51514AB-1000	1 mg

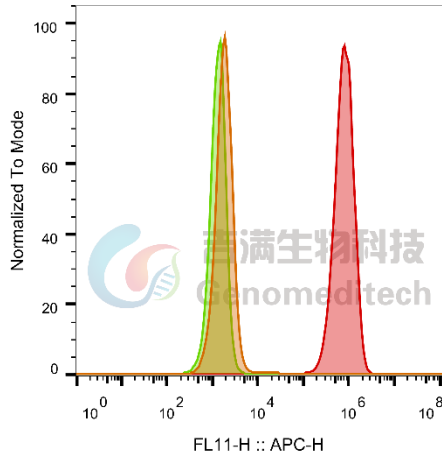
### Antibody Information

Species Reactivity	Human;
Clone	H4G3
Source/Isotype	Monoclonal human IgG1, λ
Application	Flow cytometry
Specificity	Detects CLDN3
Gene	CLDN3
Other Names	C7orf1, CPE-R2, CPETR2, HRVP1, RVP1
Gene ID	1365 (human)
Background	Claudin-3(Claudin-3) is an important transmembrane protein and belongs to the tight junction protein family. It forms tight junctions between cells and regulates cell-to-cell permeability and barrier function. CLDN3 is mainly expressed in epithelial cells, such as the gut, kidneys and lungs. In addition, CLDN3 shows abnormal expression patterns in some cancer types, particularly breast, ovarian, and other epithelial tumors.
Storage	Store at 2-8°C short term (1-2 weeks).Store at ≤ -20°C long term. Avoid repeated freeze-thaw.
Formulation	Phosphate-buffered solution, pH 7.2.
Endotoxin	< 1 EU/mg, determined by LAL gel clotting assay

## Data Examples

Flow cytometry

H\_CLDN3 HEK-293 Cell Line (Catalog # GM-C22368) was stained with Anti-CLDN3 hlgG1 Antibody(H4G3) (Catalog # GM-51514AB) or isotype control antibody, followed by anti-Human IgG APC-conjugated Secondary Antibody.



SampleID	Geometric Mean : FL11-H
HEK-293 anti-CLDN3+APC-2nd Ab	1861
HEK-293 H_CLDN3 H_IgG+APC-2nd Ab	1337
HEK-293 H_CLDN3 anti-CLDN3+APC-2nd Ab	7.59E5

Fig. FACS